



Grazing Rotations

Edinvale Farm &  
Macbeth's Butchers



MACBETH'S  
BUTCHER AND GAME DEALER



EDINVALE FARM  
*farming with nature*



# Jock Gibson

---

- Grew up in Dallas, Moray
- Building services Engineer
- Macbeth's Butchers
- Edinvale Farm
- 2024 Nuffield Scholar
- Married to Fiona
- 3 Kids – Aila (12), Tilly (9) & Rory (7)



**MACBETH'S**  
BUTCHER AND GAME DEALER



**EDINVALE FARM**  
*farming with nature*

# Macbeth's Butchers

- 60 Food Service Customers
- Retail shop in Forres
- Mail Order Service supplying 2000 UK households
- Private processing for 25 other businesses



**MACBETH'S**  
BUTCHER AND GAME DEALER



**EDINVAL FARM**  
*farming with nature*



## Edinvale Farm

---

- 250 Cattle
- Highland
- Beef Shorthorn
- 40ha owned
- 20ha 10 Year SLDT
- 65ha summer grazing



**MACBETH'S**  
BUTCHER AND GAME DEALER



**EDINVALE FARM**  
*farming with nature*



# Beef Cattle

- Originally Pedigree Highlanders
- Acquired Aberdeen Angus in '86
- Shorthorns in late '90s
- 90 Sucklers + Followers
- Outdoor Wintering
- 100% Grass and Forage Fed
- Scotch Assured
- Pasture for Life Certified



**MACBETH'S**  
BUTCHER AND GAME DEALER



**EDINVALE FARM**  
*forming with nature*



# Beef Supply

- Kill at 520kg to 600kg. 650kg Max
- Deadweight of 250kg to 320kg
- R4L to O3
- 100% Grass and Forage Fed
- Kill from 18 to 36 months



**MACBETH'S**  
BUTCHER AND GAME DEALER



**EDINVALE FARM**  
*farming with nature*



## Farm Objectives

---

- Each Breeding Cow to wean one calf a year, trouble free
- Keep young stock growing at all times.
- Year round butchery supply
- Maintain grass and forage only system
- Be profitable!
- Have Fun



**MACBETH'S**  
BUTCHER AND GAME DEALER



**EDINVALE FARM**  
*farming with nature*

# Where We started

- Set Stocked
- No rest
- Moderate amount of fertiliser.





# Grass Growth



# Paddock Grazing

- 21 Days Rotations
- Made loads of mistake – keep it simple.
- Control
- Gradual development.
- Entry convers and residuals really important
- Measure, measure, mmeasure



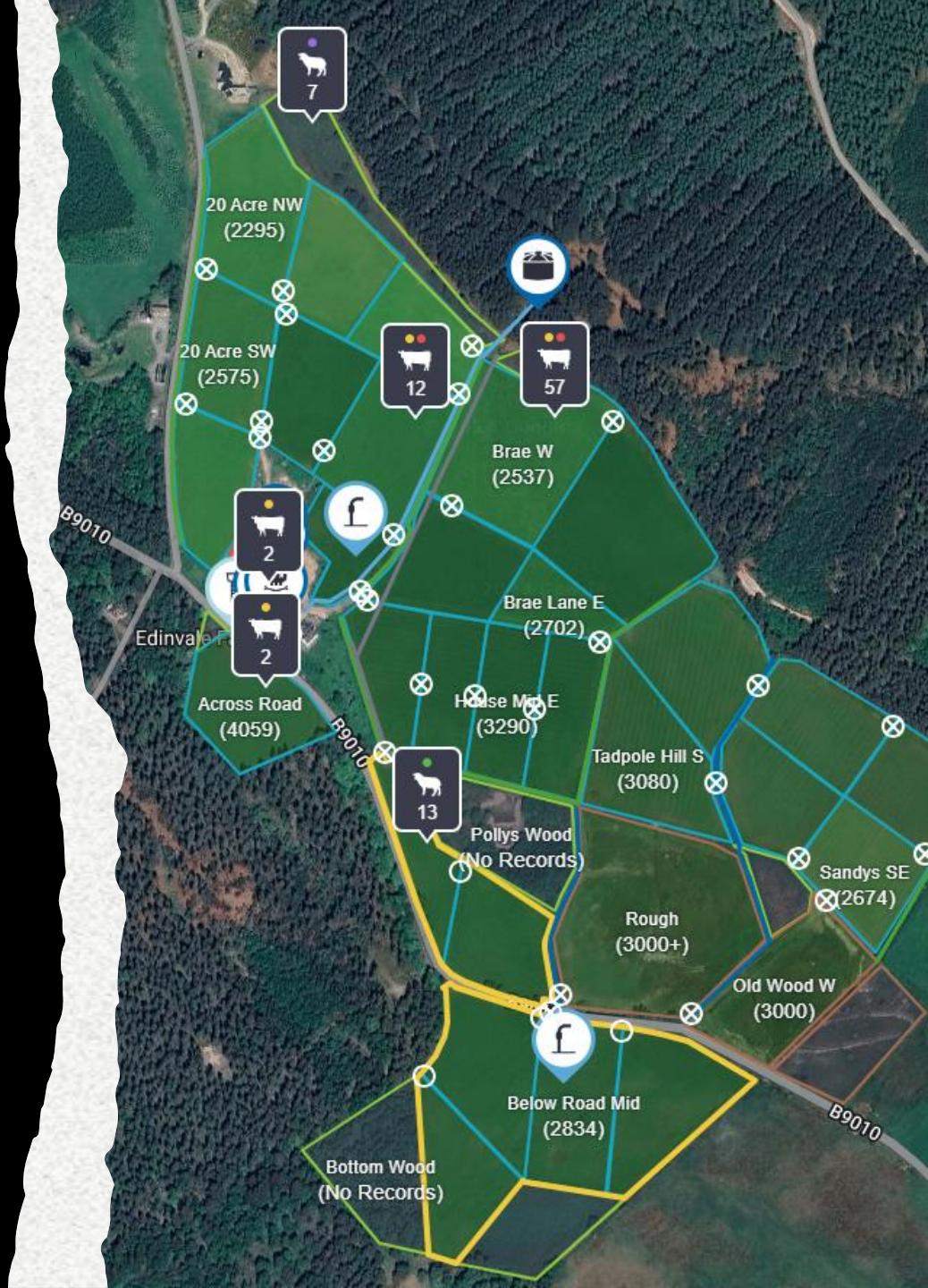
MACBETH'S  
BUTCHER AND GAME DEALER



EDINVALE FARM  
*farming with nature*

# Grazing Setup

- Block of about 40ha
- 30 paddocks
- Single Line Electric
- Every Paddock fixed water trough



# Grass Growth





# Changing grass management

---

- Taller residuals
- Longer rest periods
- Trying to increase Diversity
- Greater Resilience



# Grass Growth



# Deferred Grass and Bale Grazing





## Conclusion

---

- Move livestock
- Rest is Key
- Increased management = increased resilience
- HAVE FUN!!



**MACBETH'S**  
BUTCHER AND GAME DEALER



**EDINVALE FARM**  
*farming with nature*



[www.macbeths.com](http://www.macbeths.com) | [jock@macbeths.com](mailto:jock@macbeths.com)

07747845942



@edinvalefarm

@macbeths



@edinvalefarm

@macbeths.butchers

[linkedin.com/in/jockgibson/](https://www.linkedin.com/in/jockgibson/)



**NUFFIELD**  
Farming Scholarships



**MACBETH'S**  
BUTCHER AND GAME DEALER



**EDINVALE FARM**  
*farming with nature*

